

# ANTI-SLIP FLAT PLATE

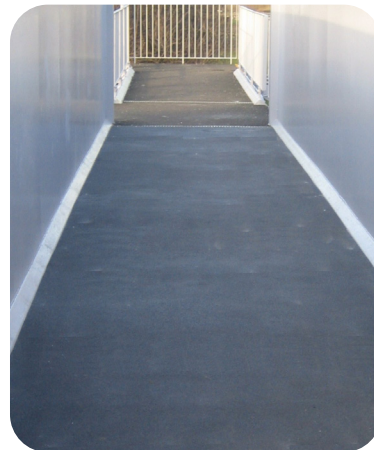
## DATASHEET

### Material Characteristics

The Quartzgrip® DDA compliant range of Anti-slip Safety Products includes a range of flat plate panels. All are manufactured from corrosion-resistant Glass Reinforced Plastic (GRP) and have been designed for easy installation onto existing concrete, timber or steel surfaces. We strongly suggest you glue and screw this product in place.

- Low profile overlay material for existing timber, concrete or steel surfaces
- Can be used for internal and external applications
- Corrosion resistant, low maintenance and easy to fit
- Popular for walkways, access ramps, stair treads – anywhere with potential slip risks.

A hard-wearing Silicon Carbide Grit is applied to the top surface to provide an effective Anti-slip finish, which outperforms conventional aluminium or rubber material in terms of slip resistance.



GRP Characteristics	Unit	Reference
Voltage breakdown	18kvolts/mm	ASTM D149
Density kg/m <sup>3</sup>	2100	BS 476
Thermal Expansion Factor	13 x 10 <sup>-6</sup> mm/mm°C	
Water Absorption rate	0.45 x 24 hrs	ASTM D570
Operating Temperature	-100°C to +200°C	BS 476



### FOR MORE INFORMATION

Call: **01206 322 899**

Email: [sales@deck-safe.co.uk](mailto:sales@deck-safe.co.uk)

Visit: [www.decksafe.co.uk](http://www.decksafe.co.uk)

